



AGENDA ITEM SUMMARY

File: 3200-20-
4825; 3900-
20-13-02
Date: 11 Sep
2013

TO: Chair and Directors, Cariboo Regional District Board

AND TO: Janis Bell, Chief Administrative Officer

FROM: Alice Johnston, Corporate Officer

DATE OF MEETING: 13 Sep 2013

SHORT SUMMARY: A Late Item - South Cariboo Search and Rescue Contribution Establishment Bylaw No. 4825, 2013

VOTING: Corporate Vote - Unweighted

MEMORANDUM: South Cariboo Search and Rescue Contribution Establishment Bylaw No. 4825, 2013 received assent of the electors at a referendum held on September 7, 2013. Accordingly, the bylaw is presented to the Board for consideration of adoption.

This item is included at late publishing because the referendum was held after the agenda was published, and to allow the bylaw to proceed to adoption in adherence with BC Assessment deadlines for new services.

ATTACHMENT: Bylaw No. 4825
Financial Analysis

POLICY IMPLICATIONS:

FINANCIAL IMPLICATIONS: Financial analysis attached.

Reviewed and concur: Scott Reid, Chief Financial Officer

CAO COMMENTS:

Reviewed and concur: N/A

OPTIONS:

- 1) Endorse the recommendation;
- 2) Receipt and other action.

RECOMMENDATION: That the agenda item summary from Alice Johnston, Corporate Officer, dated September 11, 2013, regarding Bylaw No. 4825, be received. Further, that South Cariboo Search and Rescue Contribution Establishment Bylaw No. 4825, 2013 be adopted this 13th day of September, 2013.



CARIBOO REGIONAL DISTRICT

BYLAW NO. 4825

A bylaw to establish a service to provide a contribution of funds to the South Cariboo Search and Rescue Society.

WHEREAS, the Board of the Cariboo Regional District may, by bylaw, establish and operate any service that the Board considers necessary or desirable for all or part of the regional district pursuant to the provisions of Section 796 (1) of the *Local Government Act*; and

WHEREAS, a regional district service may be operated by the regional district or through another public authority, person or organization pursuant to the provisions of Section 796 (3) of the *Local Government Act*, and

WHEREAS, the Board of the Cariboo Regional District has deemed it in the best interest of the Regional District to establish a service within the District of 100 Mile House, Electoral Areas H, L, and a portion of Electoral Area G to provide a contribution of funds to the South Cariboo Search and Rescue Society; and

WHEREAS, the Board of the Cariboo Regional District has obtained the approval of the service area electors by referendum in accordance with Section 801.2 of the *Local Government Act*;

NOW THEREFORE, the Board of the Cariboo Regional District, duly assembled in an open meeting, enacts as follows:

1. Establishment

The Cariboo Regional District hereby establishes, within the District of 100 Mile House, Electoral Areas H and L and a portion of Electoral Area G, a service to be known as the South Cariboo Search and Rescue Contribution Service, for the purpose of providing a contribution of funds to the South Cariboo Search and Rescue Society for search and rescue services.

2. Service Area and Participants

- (a) The boundaries of the service area are shown outlined on Schedule 'A', attached to and forming part of this Bylaw, and are known as the "South Cariboo Search and

Rescue Contribution Service Area”.

- (b) The participants of the South Cariboo Search and Rescue Contribution Service are the District of 100 Mile House and Electoral Areas G, H and L.

3. Cost Recovery

- (a) The annual costs for the service shall be recovered by one or more of the following:

1. the requisition of money to be collected by parcel taxes imposed in accordance with Division 4.3 of the *Local Government Act*;
2. revenues raised by other means authorized by the *Local Government Act* or another Act;
3. revenues raised by way of agreement, enterprise, gift, grant or otherwise; and/or,
4. property value taxes imposed pursuant to the provisions of the *Local Government Act* on the basis of net taxable value of land and improvements.

- (b) The maximum amount of money that may be requisitioned in any one year for the service provided in Section 1 of this bylaw shall not exceed the greater of \$30,000 or an amount raised by applying a tax rate of \$0.0124/\$1,000 to the net taxable value of land and improvements in the service area.

4. Apportionment

The costs of the service shall be apportioned amongst all participating areas on the basis of the converted value of land and improvements in the service area.

5. Citation

This bylaw may be cited for all purposes as the “South Cariboo Search and Rescue Contribution Establishment Bylaw No. 4825, 2013”.

READ A FIRST TIME THIS 7th day of June, 2013.

READ A SECOND TIME THIS 7th day of June, 2013.

READ A THIRD TIME THIS 24th day of July, 2013.

I hereby certify the foregoing to be a true and correct copy of "South Cariboo Search and Rescue Contribution Establishment Bylaw No. 4825, 2013" as read a third time by the Cariboo Regional District Board on the 24th day of July, 2013.

A Johnston
Corporate Officer

Approved by the Inspector of Municipalities on the 31st day of July, 2013.

Approved by the Electors in the service area on the 7th day of September, 2013.

ADOPTED this day of , 2013.

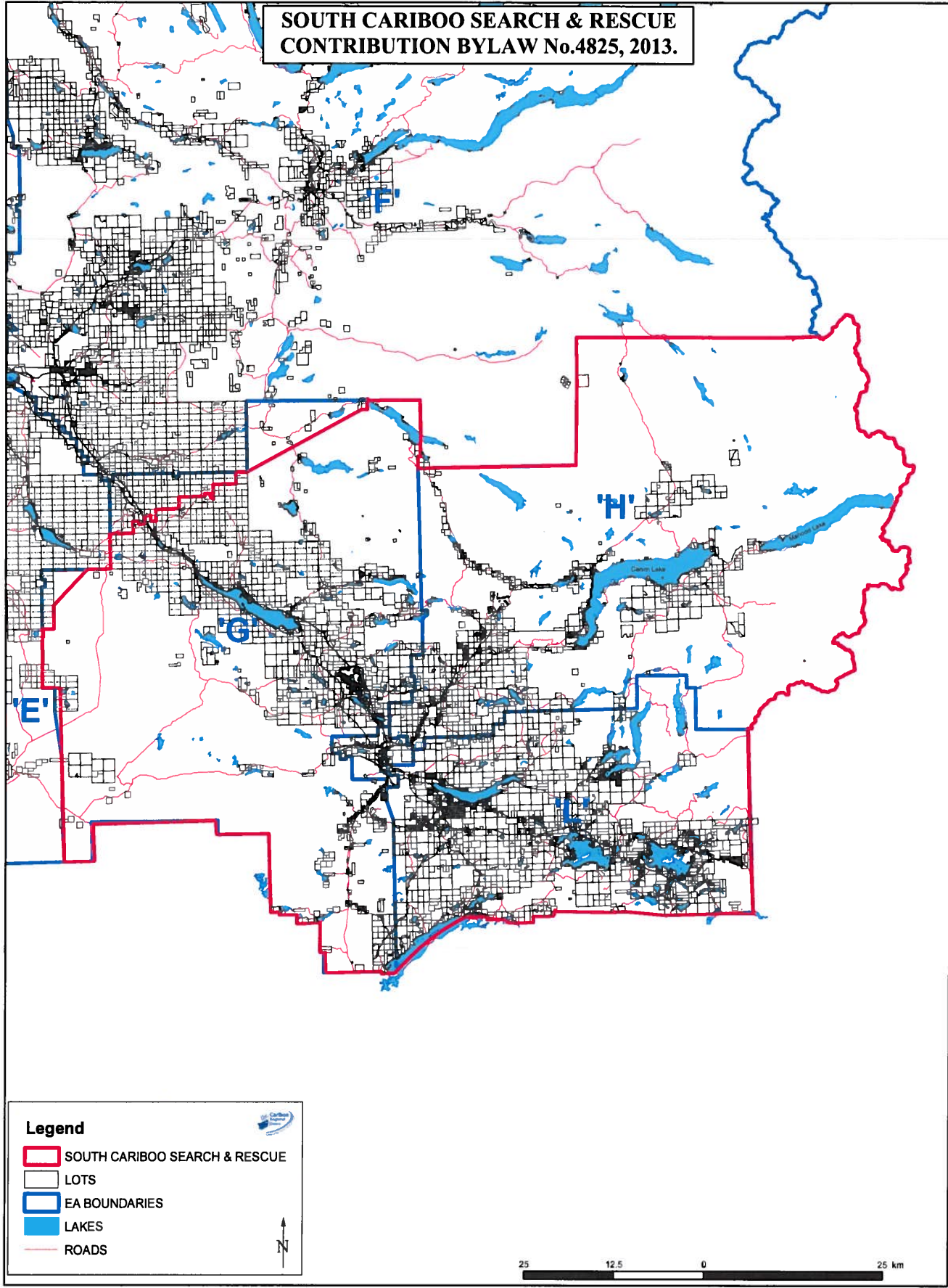
Chair

Corporate Officer






I hereby certify the foregoing to be a true and correct copy of "South Cariboo Search and Rescue Contribution Establishment Bylaw No. 4825, 2013" as adopted by the Cariboo Regional District Board on the day of , 2013.

Corporate Officer

**SOUTH CARIBOO SEARCH & RESCUE
CONTRIBUTION BYLAW No.4825, 2013.**



Legend

-  SOUTH CARIBOO SEARCH & RESCUE
-  LOTS
-  EA BOUNDARIES
-  LAKES
-  ROADS



Cariboo Regional District
South Cariboo Search and Rescue
Contribution Establishment

Bylaw No. 4825 , 2013

	Net Taxable Assessment	Converted Assessment
2013 Revised Assessment <i>Land and improvements</i>	\$ 2,419,354,839	\$ 297,619,048
Tax Requisition <i>Estimated current</i>	25,000	25,000
Tax Rate per \$1,000 of Total Improvements Residential Rate per \$100,000	\$ 0.0103	\$ 0.84
Taxation Limit -the greater of : \$30,000 OR \$0.0124 per \$1,000 on the net taxable value of land and improvements for the service Area		



Prepared by: Scott Reid CGA
Chief Financial Officer, May 16, 2013